

OLYMPUS[®]

PC TRANSCRIPTION KIT

AS-2400

INSTRUCTIONS

EN

DSS Player Standard Transcription Module Features

EN

DSS Player Standard Transcription Module Features

- Plays DSS, DSS Pro, WMA, MP3 and WAV/AIFF audio formats in the background when another application is running, such as a word processor.
- Enables foot switch control of the playback process.
- Transcription can be done by combining the playback sound with the adjustable playback speed, tone control, and noise cancellation. However, it is not possible to playback while setting the playback speed and noise cancellation simultaneously with the Macintosh version.
- Support background speech recognition by Dragon.*
- Automatic software update through Internet.*
- 2 modes/views of operation for Transcribe bar.*

* Windows only

- OLYMPUS CORPORATION holds the copyrights for DSS Player Standard Transcription Module software and the instructions (this manual).
- Microsoft and Windows are registered trademarks of Microsoft Corporation.
- Macintosh is a trademark of Apple Inc.
- Intel is a registered trademark of Intel Corporation.
- Dragon is registered trademark of Nuance Communications, Inc.
- Other product and brand names mentioned herein may be the trademarks or registered trademarks of their respective owners.

...dss^{PRO}
DIGITAL SPEECH STANDARD

Safety precautions

- For safety, do not leave this product within the reach of infants and children.
- Never modify or disassemble this product.
- Do not drop the Product or allow it to suffer extreme shocks.
- Do not leave the Product exposed to high humidity, high temperature or direct sunlight.
- If the Product is wet, wipe it immediately with a dry cloth.
- Do not store the Product in humid or dusty environments.
- Do not bend or twist the plug part forcibly.
- To avoid damage, dirt should be removed using a soft, dry cloth.

EN

Safety precautions

DSS Player Software

Download the software

EN

DSS Player Software

In order to download the software, please access the website in your respective region.

<http://www.olympus.eu/sds-downloads/>

(Europe, Middle east and Africa)

<https://www.olympusamericaproductaction.com/odms-r7>

(The Americas)

<https://www.olympus.com.au/support/>

(Oceania)

OS compatibility

For information on the latest OS upgrades compatibility, please visit the Olympus Web page.

Using Online Help

For information on the DSS Player usage and features, refer to the Online help.

To start Online help:

Windows

- 1 Click the [start] button, then select [All Programs], [Olympus DSS Player Standard], [Transcription Module Help].
- 2 While DSS Player is running, select the [Help] menu, [Contents].
- 3 While DSS Player is running, press F1 on the keyboard.

Macintosh

While DSS Player is running, select [DSS Player Help] from the [Help] menu.

Note

- Online help is available after the DSS Player is installed.

EN

Using Online Help

Running DSS Player Software

By default, connecting the recorder to your PC, will start the application automatically. Connect to your PC Using the Cradle.

EN

Running DSS Player Software

Windows


Disabling Automatic Start

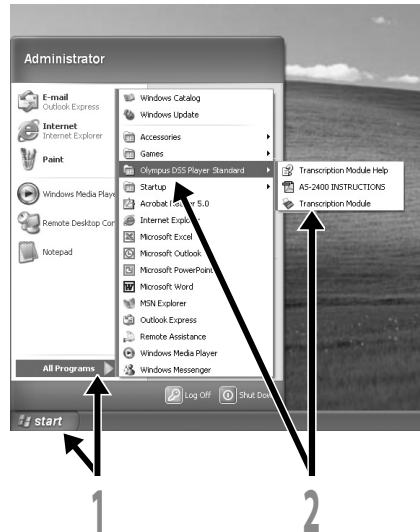
- 1 Right-click the Device Detector in the System Tray in the lower right-hand corner of the screen, then select [Setting...].**
- 2 Click [DSS Player Standard Transcription Module].**
The check mark on [DSS Player Standard Transcription Module] disappears.

Manual Start

- 1 Click the [start] button, then select [All Programs].**
All program menu will be displayed.
- 2 Select [Olympus DSS Player Standard], then click [Transcription Module].**

Note

- If you install DSS Player Standard, Device Detector that makes DSS Player run automatically when connecting Olympus Digital Voice Recorder will be installed. Device Detector will always be displayed as  icon in the task tray.



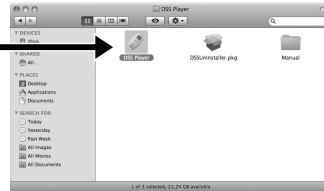
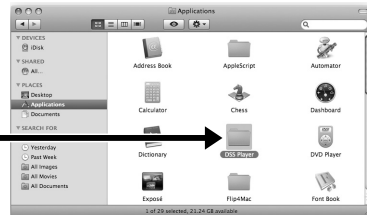
Macintosh

Disabling Automatic Start

- 1 Click the Dock's System Preferences.
- 2 Click Device Detector.
- 3 Turn the automatic startup setting Off.

Manual Start

- 1 Double click the DSS Player icon for the folder in [Applications] → [DSS Player]. All program menu will be displayed.
- 2 Register user information
The user's registration screen will be displayed at the time of initial startup. Please input the serial number. Please see the seal attached to the license card for the serial number. After the input has ended, click [OK] to complete the registration.



Connecting the RS27H/RS28H Foot Switch

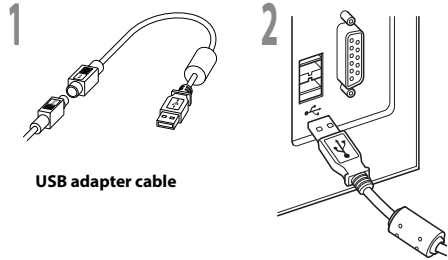
Windows

Macintosh

EN

Connecting to a USB Port

- 1 Connect the foot switch cable to the USB adapter cable.
- 2 Connect the USB adapter cable to the PC's USB port.



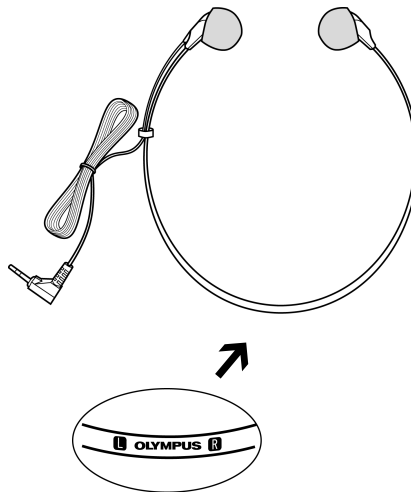
Connecting the RS27H / RS28H Foot Switch

Connecting the E102 Headset

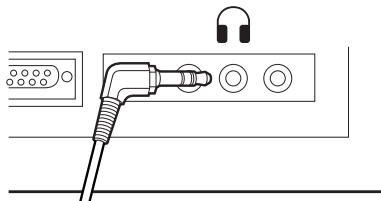
The E102 is a stereo headset. When playing stereo sound, wear the set properly, observing the L and R markings.

EN


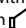

Connecting the E102 Headset



Plug the headset into the PC's earphone terminal



Note

- If your PC does not have a terminal marked with , plug the headset into a terminal marked with  or .

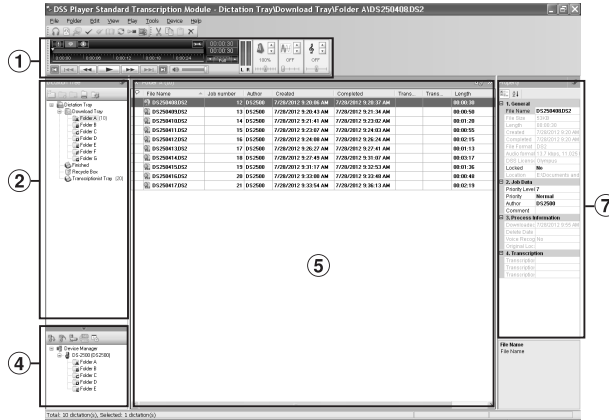
Window Names

Windows

EN

* Main screen is displayed when DSS Player is started.

Window Names



1 Playback Control Bar

Control buttons to play and stop dictation files.

2 Transcription Tree View

Displays the directory structure of the folders in which dictation files and document files are stored.

3 Dictation Tree View

Displays the directory structure of the folders in which dictation files are stored.

4 Device Tree View

Displays the directory structure of the folders in the recorder.

5 Contents List View

Displays the dictation and document files in the folder selected in 2 and 4.

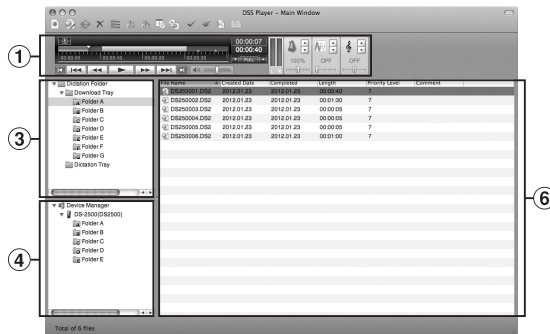
6 Dictation List View

Displays the dictation files in the folder selected in 3 and 4.

7 Property View

Displays the folder and file properties which are selected 2 and 5.

Macintosh



Specifications

- **Model:**
Foot Switch RS27H / RS28H
- **Output plug:**
miniDIN 8Pin
- **Operating temperature:**
0 to 42 °C (32 to 107 °F)
- **External dimensions:**
190 mm x 120 mm x 26.5 mm (RS27H)
190 mm x 120 mm x 33.5 mm (RS28H)
(without protrusions)
- **Weight:**
550 g

Design and specifications are subject to change without notice.

EN

Specifications

For customers in North and South America:

FCC Notice

- This equipment has been tested and found to comply with the limits for a Class B digital device, pursuant to Part 15 of the FCC Rules. These limits are designed to provide reasonable protection against harmful interference in a residential installation.
- This equipment generates, uses, and can radiate radio frequency energy and, if not installed and used in accordance with the instructions, may cause harmful interference to radio communications.
- However, there is no guarantee that interference will not occur in a particular installation. If this equipment does cause harmful interference to radio or television reception, which can be determined by turning the equipment off and on, the user is encouraged to try to correct the interference by one or more of the following measures:
 - Reorient or relocate the receiving antenna.
 - Increase the separation between the equipment and receiver.
 - Connect the equipment into an outlet on a circuit different from that to which the receiver is connected.
 - Consult the dealer or an experienced radio/TV technician for help.
 - Only the OLYMPUS-supplied USB cable should be used to connect the equipment to USB enabled personal computers (PC).

FCC Caution

Changes or modifications not expressly approved by the party responsible for compliance could void the user's authority to operate the equipment.

For customers in USA

Declaration of Conformity

Model Number: RS27H / RS28H

Trade Name: OLYMPUS

Responsible Party: OLYMPUS AMERICA INC.

Address: 3500 Corporate Parkway, P.O. Box 610, Center Valley, PA 18034-0610, U.S.A.

12 Telephone Number: 484-896-5000

Tested To Comply With FCC Standards FOR HOME OR OFFICE USE

This device complies with Part 15 of the FCC rules. Operation is subject to the following two conditions:

- (1) This device may not cause harmful interference, and
- (2) this device must accept any interference received, including interference that may cause undesired operation.

For customers in CANADA

CAN ICES-3 (B) / NMB-3 (B)

For customers in Europe:



The "CE" mark indicates that this product complies with the European requirements for safety, health, environment and customer protection. CE-mark products are for sale in Europe.



This symbol [crossed-out wheeled bin WEEE Annex IV] indicates separate collection of waste electrical and electronic equipment in the EU countries. Please do not throw the equipment into the domestic refuse. Please use the return and collection systems available in your country for the disposal of this product.