

HOW TO UPDATE FIRMWARE

Models: DS-9500, 9000, 2600, 7000, 3500, 5000

Update Procedure:

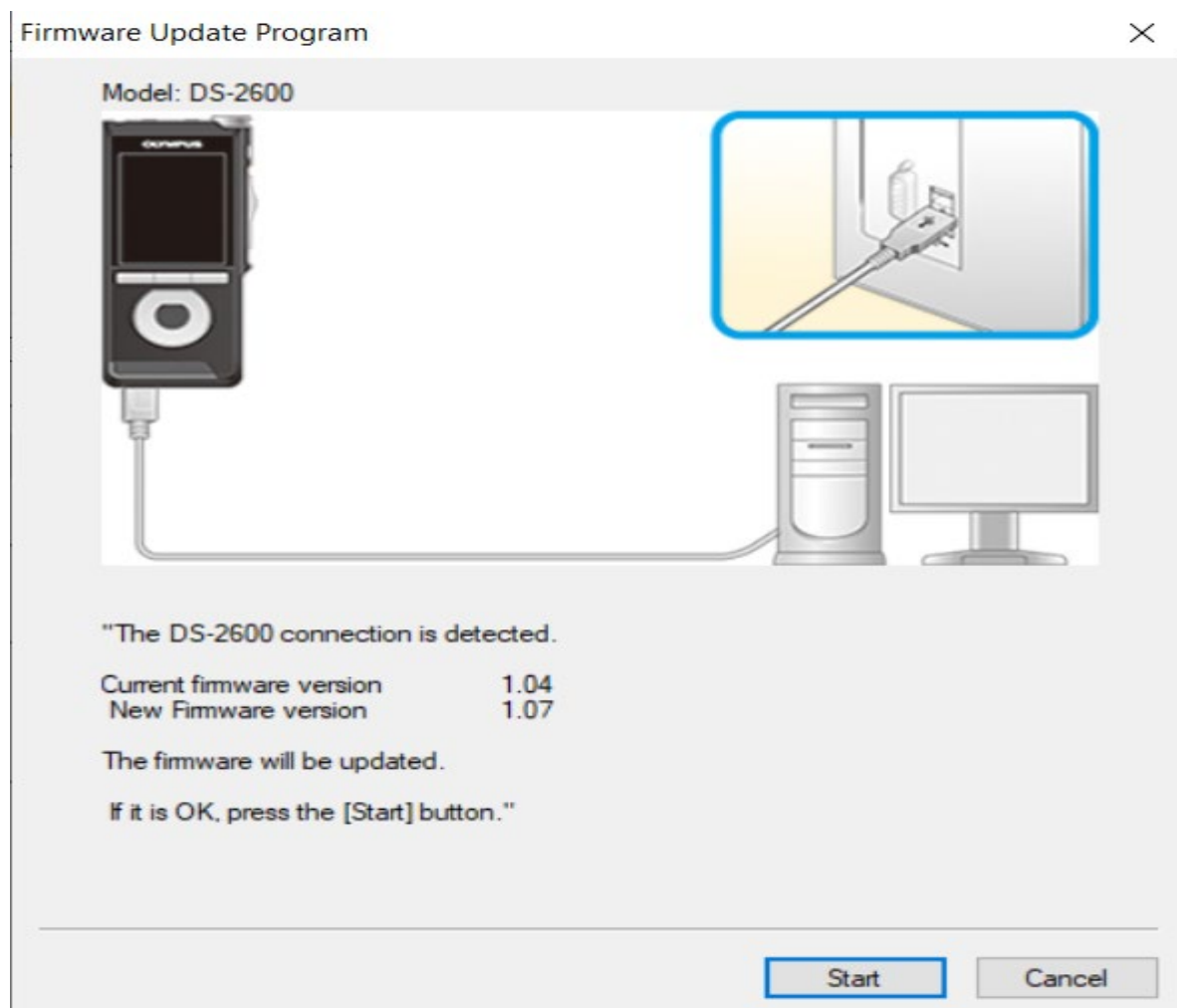
1. Recorder must be ON and connected to computer.
2. Download firmware updates from:
<https://www.opdsupport.com/downloads/firmware/mobile-dictation>
3. Download the correct firmware for your model: i.e. DS-90000
4. Run the firmware update program – see below:

Important Notes:

Ensure battery level is **60% or higher** before starting firmware update.
(Faster charging when using cradle and power adaptor.)

Ensure Windows has completed installing all firmware drivers (especially if the recorder hasn't been connected to the computer before).

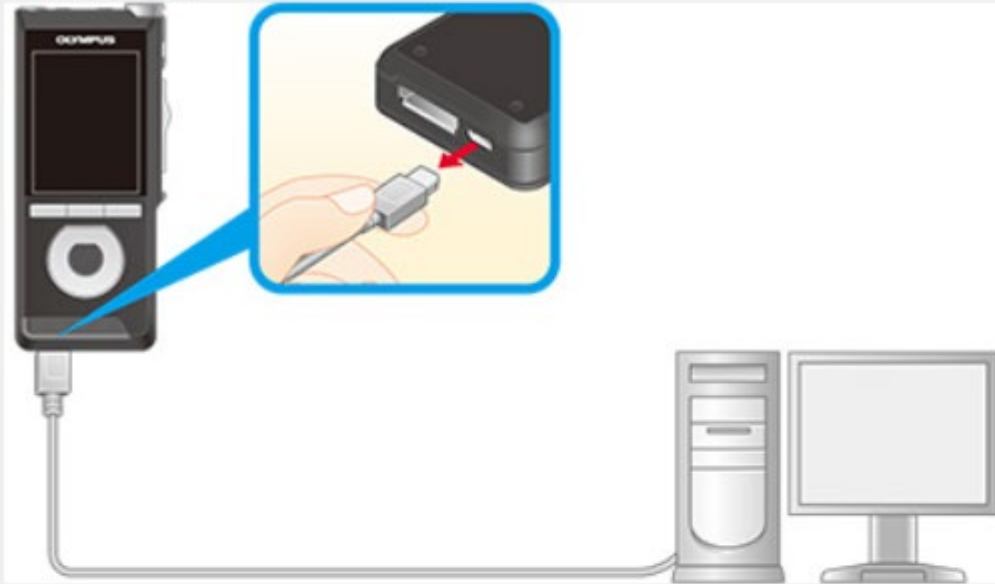
WARNING: DO NOT UNPLUG RECORDER WHILE THE FIRMWARE UPDATE IS IN PROGRESS!



Firmware Update Program



Model: DS-2600



The firmware (version 1.07) transfer is finished.

The firmware is automatically updated when DS-2600 is disconnected from the PC.

Finish